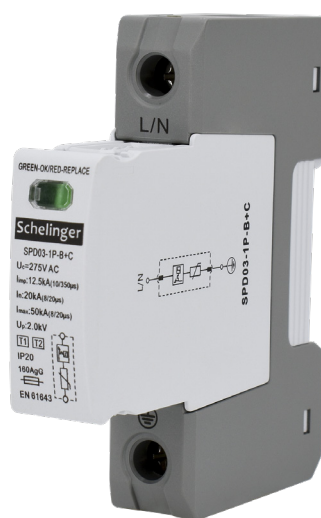
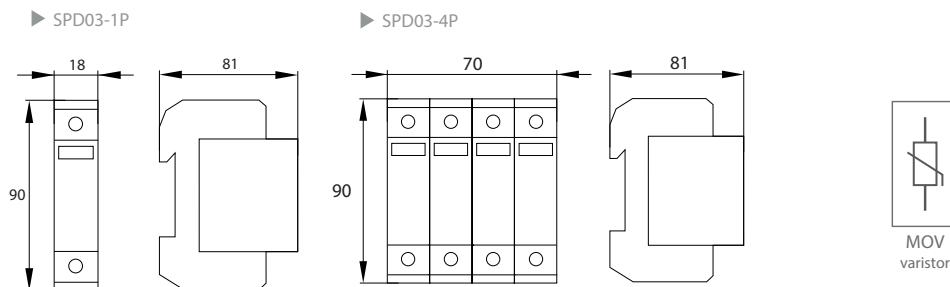
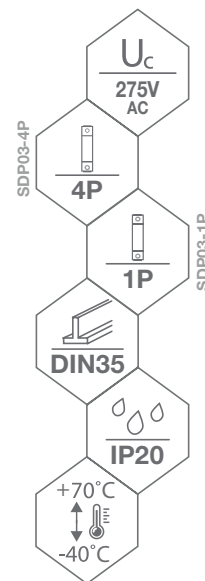




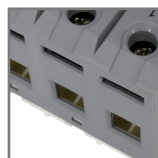
SPD03-4P



SPD03-1P



galvanised steel terminal



terminal capacity: max. 35 mm<sup>2</sup>



capability to connect using comb busbars

Schelinger				$U_p$	$I_{imp}$	$I_n$	$I_{max}$
code	EAN	package	class/type	voltage protection level [kV]	inrush current [kA]	rated discharge current [kA]	limit discharge current [kA]
A51-SPD03-1P-B+C	5900280964557	1/144	B+C / T1+T2	≤ 2.0	12.5	20	50
A51-SPD03-4P-B+C	5900280964564	1/36	B+C / T1+T2	≤ 2.0	12.5	20	50